

# MinerTool User Guide

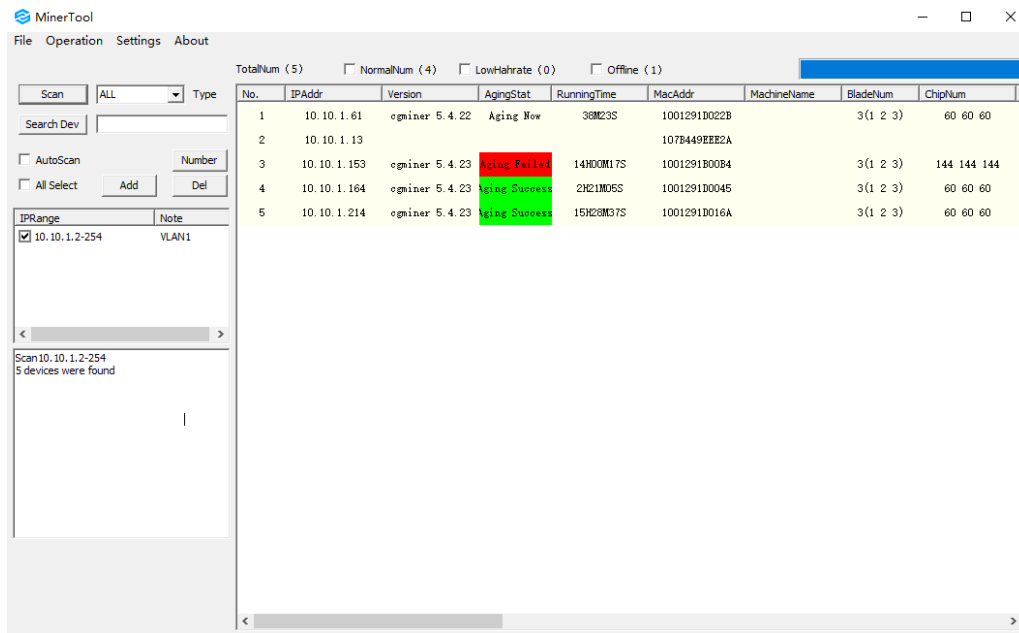
## Catalogue

Software Instructions .....	3
1 Set search segment .....	3
1.1 About network segment.....	4
1.2 Add and delete .....	4
1.3 Scan.....	4
1.4 AutoScan .....	4
1.5 Number.....	4
1.6 Parameter description.....	4
2 Miner list and operation.....	5
2.1 Open Homepage .....	6
2.2 Restart miner.....	6
2.3 Reboot system.....	6
3 Menu Bar .....	6
3.1 File .....	6
3.1.1 Export File .....	6
3.1.2 Import File .....	7
3.1.3 Quit .....	7
3.2 Edit.....	7
3.2.1 Restart.....	8
3.2.2 Reboot.....	8
3.2.3 Update Machine.....	8
3.2.4 Set Static IP .....	10
3.2.5 Set DHCP.....	10
3.2.6 Set Pool .....	10

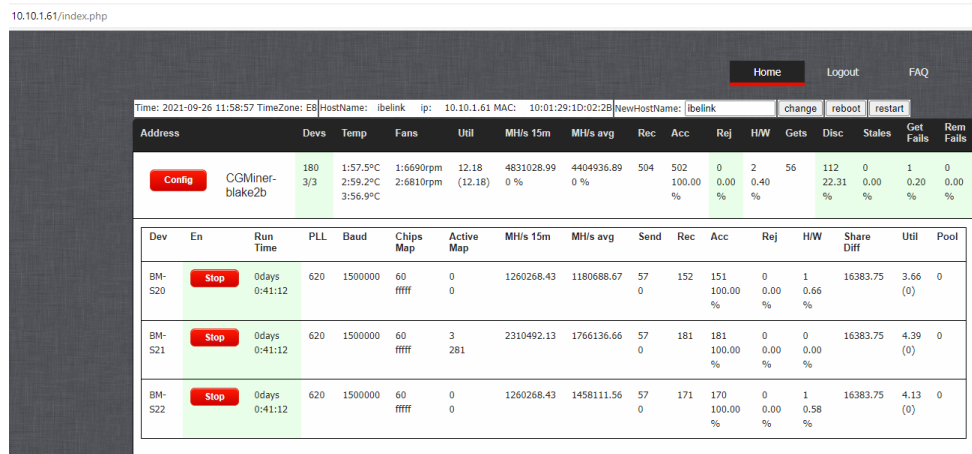
3.2.7 Set Name .....	12
3.2.8 Blink Device .....	13
3.2.9 Inspection.....	13
3.2.10 Set Voltage .....	13
3.2.11 Get First Worker .....	13
3.2.12 Set Safe Temperature .....	13
3.2.14 Exec System Cmd .....	14
3.2.15 Exec Miner Cmd .....	14
3.3 Settings.....	14
3.4 Help.....	14
3.4.1 Get new version.....	14
3.4.2 About .....	15

## Software Instructions

MinerTool is a tool software specially used for managing miner. The software can realize multi network segment miner management, such as miner information query, miner setting, or pool setting, etc.



Users can open the home page of corresponding miner through this software. Then you can monitor and modify the configuration parameters in real time through the web page.



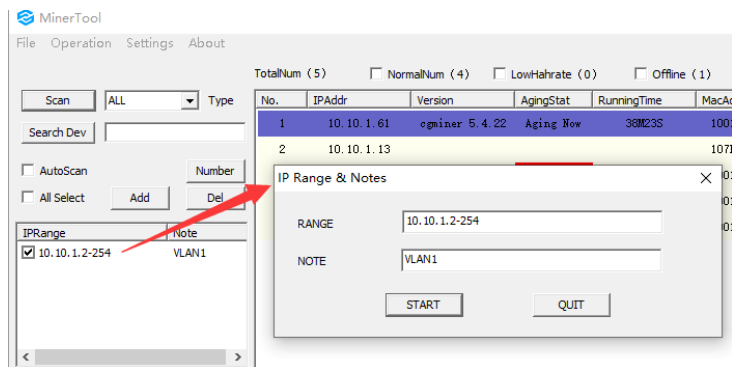
The usage of MinerTool software is described in detail below.

### 1 Set search segment

After the miner is powered on and connected to the network for normal operation, open the software, add the network segment where the machine is located, click [Scan], and you can query the detailed data of the miner, including IP, hash rate, temperature, voltage and other data.

## 1.1 About network segment

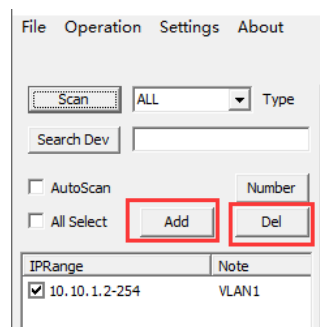
Ensure that the network segment where the miner is located is added to the network segment search list of MinerTool.



In the picture 10.10.1.x is added. The network segment scanning range is 2 ~ 254 (0, 1 and 255 have special purposes).

## 1.2 Add and delete

You can add and delete search segment as you need.



## 1.3 Scan

Select the corresponding model or "All" of the miner from the drop-down list, and then click [Scan] to find miners in the LAN.

## 1.4 AutoScan

Select [AutoScan] the tool will scan the LAN according to the set time interval.

## 1.5 Number

This button is mainly used to calculate the number of selected mining miner. Select some mining machines and click the [Number] button to know how many miners are selected.

## 1.6 Parameter description

The software displays the following miner parameters, which are described one by one below:

IPAddr: the address of miner

Version: the software version of miner

AgingStat: Just used for miner aging

RunningTime: Running time of the miner

MacAddr: Mac Address of miner

MachineName: Miner identification for large-scale management

BladeNum: the number of hashboard

ChipNum: the number of chips each hashboard

DevType: the type of miner such as BM-S1

Algorithm: mining algorithm such as blake2b for SC

State: the state of miner

Hashrate: hash rate of miner

Temp: the temperatures of all the hashboards

PLL: the frequency of all the hashboards

ErrorRate: the error rate of all the hashboards

RejectRate: the reject rate of all the hashboards

Power: the type of power

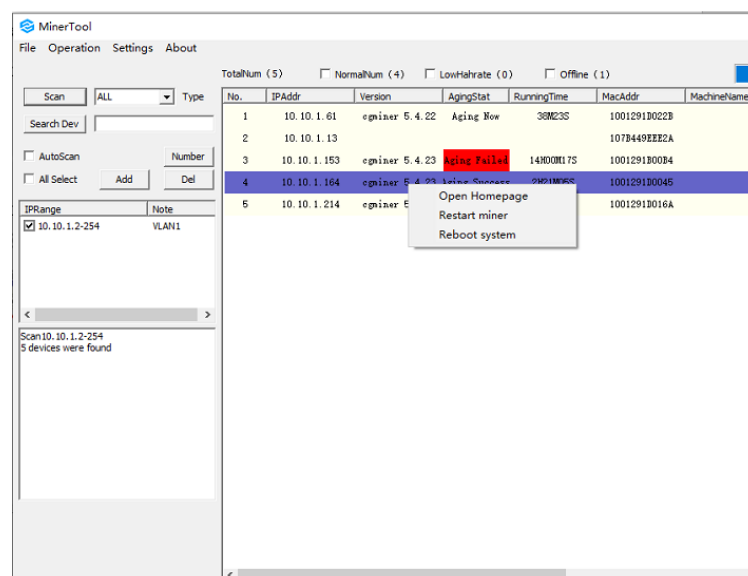
ScanTime: the time of this scanning

Voltage: the voltage of the miner

BadChip: the position of bad chip

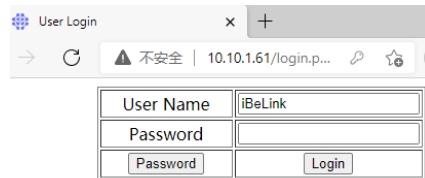
## 2 Miner list and operation

Select the miner and click the right mouse button to open the menu [Open the Homepage/ Restart miner/Reboot system]. Three functions are briefly described below:



## 2.1 Open Homepage

To open the home page of the miner. Then you can operate the miner on the web. You can also directly enter the IP address of the miner in the web explorer as shown in the figure below to enter the home page. (default user name and password is **iBeLink**)



User Name	iBeLink
Password	
<input type="button" value="Password"/>	<input type="button" value="Login"/>

## 2.2 Restart miner

Restart the miner program in the device.

\*Note: different of restart and reboot:

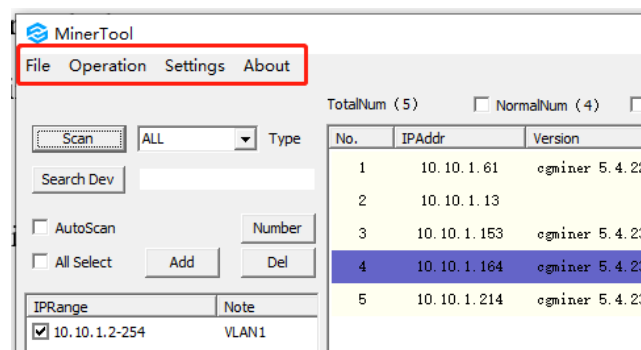
Restart is to restart the miner program. Reboot is to reboot the system. So reboot will take more time than restart.

## 2.3 Reboot system

Reboot the system of device.

# 3 Menu Bar

The software menu bar contains four items: File, Operation, Settings, About.

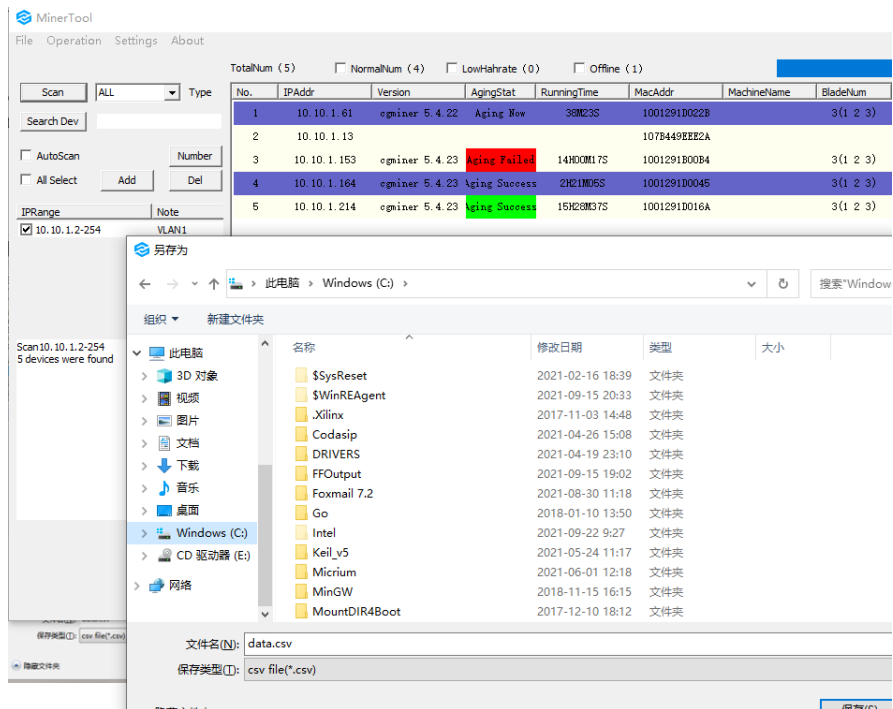


## 3.1 File

Include [Export File], [Import File], [Quit].

### 3.1.1 Export File

By default, the information of all the miners in the list is exported. If you want to export the corresponding information, select the miner separately and click export.



The export information as below:

The screenshot shows an Excel spreadsheet titled 'data.csv - Excel'. The data is organized into columns: 序号 (Serial Number), IP地址 (IP Address), 版本 (Version), 老化状态 (Aging Status), 运行时间 (Running Time), MAC地址 (MAC Address), 位置 (Position), 刀数 (Blade Count), 芯片数 (Chip Count), 设备型号 (Device Model), 算法 (Algorithm), 状态 (Status), and 算力 (G) (Hashrate). The data is as follows:

序号	IP地址	版本	老化状态	运行时间	MAC地址	位置	刀数	芯片数	设备型号	算法	状态	算力 (G)
1	10.10.1.61	cgminer 5.4.22	Aging Nov	38M23S	1001291D022B		3(1 2 3)	60 60 60	BM-S2	blake2b	Mining...	4296
2	10.10.1.13											
3	10.10.1.153	cgminer 5.4.23	Aging Failed	14H00ML7S	1001291B00B4		3(1 2 3)	60 60 60	BM-S2	blake2b	Mining...	4726
4	10.10.1.164	cgminer 5.4.23	Aging Success	2H21M05S	1001291D0045		3(1 2 3)	60 60 60	BM-S2	blake2b	Mining...	4726
5	10.10.1.214	cgminer 5.4.23	Aging Success	15H28M37S	1001291D016A		3(1 2 3)	60 60 60	BM-S2	blake2b	Mining...	4726

### 3.1.2 Import File

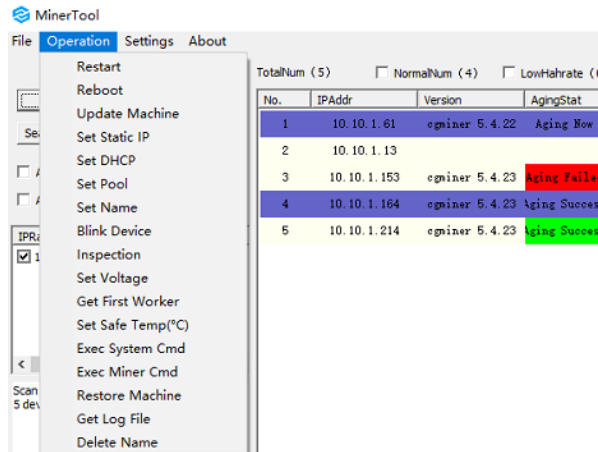
You can also import the .csv file into the MinerTool, and the details of miner can be displayed according to the corresponding entry information.

### 3.1.3 Quit

Will close the MinerTool.

## 3.2 Edit

The edit menu contains the main operations of the miner, as shown below :



### 3.2.1 Restart

Restart the miner program.

### 3.2.2 Reboot

Reboot the system.

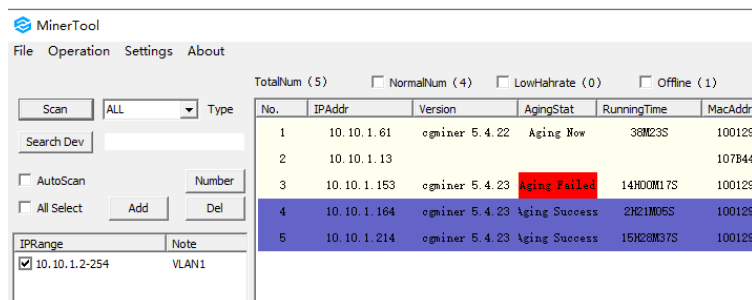
### 3.2.3 Update Machine

Will update the miner system. You can get the update package at <http://ibelink.com.hk/xiazai/>. Notice: if you do not select special miner, all the miner will be update.

If the update package is updateNoCfg5.3.9ForUser.tar.gz, update the device as bellow:

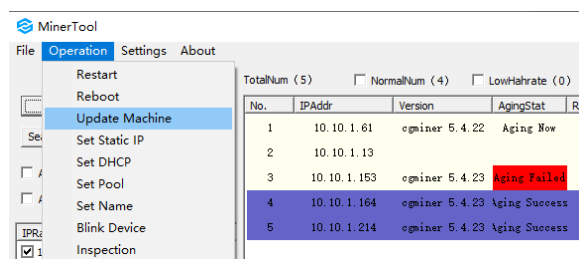
#### a Select miner

Select the miner you want update(None selected, all the miners will be update)

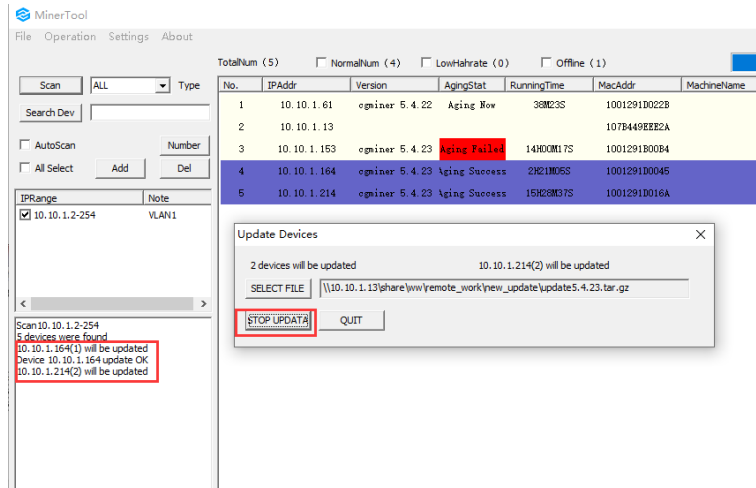
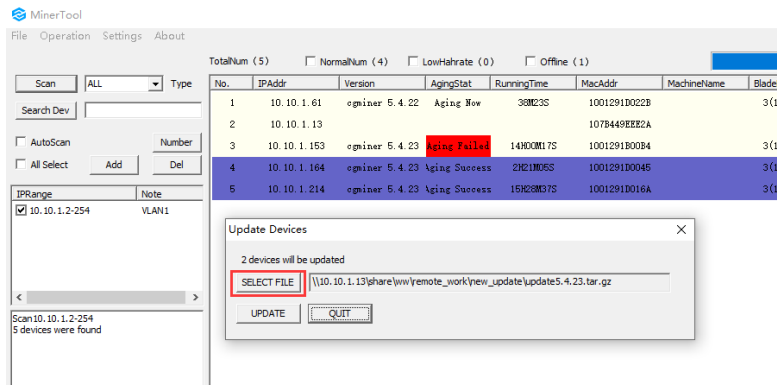


#### b Do update

Select: Operation->Update Machine->pick updateNoCfg5.3.9ForUser.tar.gz->[开始升级](#)

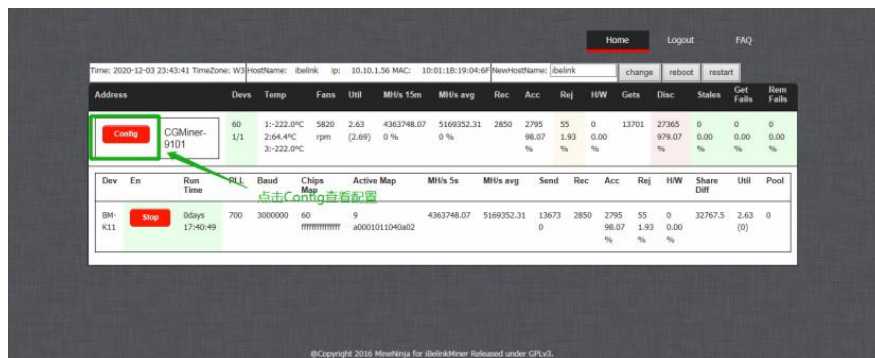


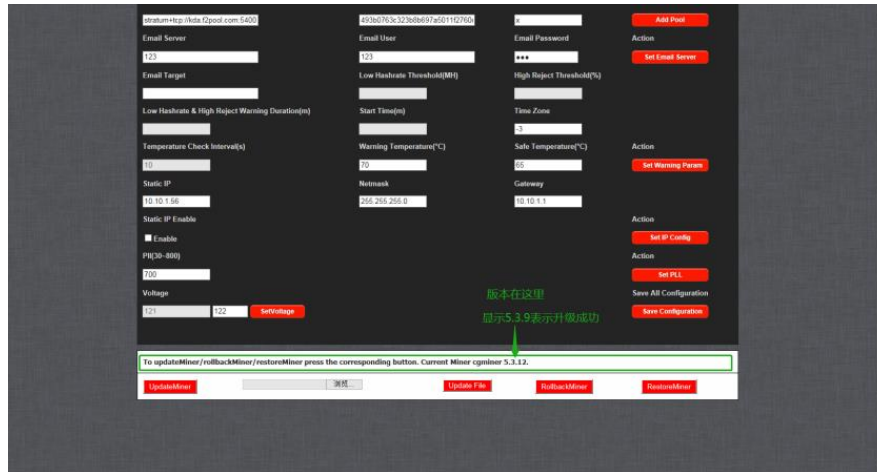




## c Check Version

After update you should restart the miner. Then you can login the miner and click [Config] to see the version of miner.





### 3.2.4 Set Static IP

Set the miner to static ip. We don't recommend it if it's necessary.

### 3.2.5 Set DHCP

Set the network of miner to DHCP. This is default mode of miner we recommend miner as this.

### 3.2.6 Set Pool

The mining pool is the platform for the miner to submit mining results. Generally speaking, the miner needs to be equipped with two or more pools. One main pool and one standby pool. When the main pool cannot be connected by the miner due to some unexpected reasons. The miner can automatically switch to the standby pool. This will avoid excessive losses to the owner due to too long downtime.

**a Several concepts: mining pool, Pool URL, Pool User, Pool Password**

Pool	Priority	URL	Status	Delete	Gets	Diff	Accepts	Rejects	Discards	Stales	Get Fails
0	Top	stratum+tcp://sc.f2pool.com:7788	Alive	Delete	33	3125.992	604 97.73 %	14 2.27 %	66 200.00 %	0 0.00 %	0 0.00 %
1	Top	stratum+tcp://sc.f2pool.com:7788	Alive	Delete	0	NAN	0	0	0	0	0
2	Top	stratum+tcp://sc-cn.luxor.tech:3333	Alive	Delete	0	NAN	0	0	0	0	0
3	Top	stratum+tcp://sc.ss.dpool.com:3333	Alive	Delete	1	NAN	0	0	0	0	0

Pool URL	Pool User	Pool Password	Action
stratum+tcp://sc.f2pool.com:7788	0d8f31e412df04911ab8fe1b79f5a8a00b	x	Add Pool
Power Consumption(W)	Reconfig Times	Power Temperature	
2070	0	0	
Low Hashrate Threshold(MH)	High Reject Threshold(%)	Temperature Check Interval(s)	

Mining pool: The miner should connect to mining pool if it wants to mine. Every digital currency has special mining pool. You can get more information from <https://miningpoolstats.stream/>. Let's take f2pool as an example.

First, login the main page <https://www.f2pool.com/>

Main

Labs

Q

Input currency name

CNY

	Pool Hashrate	Hashrate	Price	Daily Revenue	Algo	
<div><div><div>ZEC</div></div></div>	1305.86 <small>Mhash/s</small>	5101.21 <small>Mhash/s</small>	¥ 714.64 <small>↗</small>	¥ 0.3536 <small>/K</small>	Equihash	<div>Tutorial</div> <div>Popular Miners</div> <div>More <small>▼</small></div>
<div><div><div>ZEN</div></div></div>	532.98 <small>Mhash/s</small>	2521.59 <small>Mhash/s</small>	¥ 426.27 <small>↗</small>	¥ 0.3443 <small>/K</small>	Equihash	<div>Tutorial</div> <div>Popular Miners</div> <div>More <small>▼</small></div>
<div><div><div>CKB</div></div></div>	28.44 <small>PH/s</small>	63.74 <small>PH/s</small>	¥ 0.0795 <small>↗</small>	¥ 0.0142 <small>/G</small>	Eaglesong	<div>Tutorial</div> <div>Popular Miners</div> <div>More <small>▼</small></div>
<div><div><div>CFX</div></div></div>	236.36 <small>GH/s</small>	1782.81 <small>GH/s</small>	¥ 2.08 <small>↗</small>	¥ 0.3520 <small>/H</small>	Octopus	<div>Tutorial</div> <div>Popular Miners</div> <div>More <small>▼</small></div>
<div><div><div>KDA</div></div></div>	3586.84 <small>TH/s</small>	21.21 <small>PH/s</small>	¥ 11.11 <small>↗</small>	¥ 0.0267 <small>/G</small>	Blake2S	<div>Tutorial</div> <div>Popular Miners</div> <div>More <small>▼</small></div>
<div><div><div>HNS</div></div></div>	2756.78 <small>TH/s</small>	6321.83 <small>TH/s</small>	¥ 1.31 <small>↗</small>	¥ 0.0614 <small>/G</small>	Blake2B + SHA3	<div>Tutorial</div> <div>Popular Miners</div> <div>More <small>▼</small></div>
<div><div><div>SC</div></div></div>	5390.80 <small>TH/s</small>	13.52 <small>PH/s</small>	¥ 0.0933 <small>↗</small>	¥ 26.92 <small>/T</small>	Blake2B	<div>Tutorial</div> <div>Popular Miners</div> <div>More <small>▼</small></div>
<div><div><div>DGB</div><div><div>Qubit</div></div></div></div>	19.95 <small>TH/s</small>	286.05 <small>TH/s</small>	¥ 0.2905 <small>↗</small>	¥ 0.7064 <small>/G</small>	Qubit	<div>Tutorial</div> <div>Popular Miners</div> <div>More <small>▼</small></div>

Then, click the Tutorial of SC as example. You can find all your need information at the page such as the URL: stratum+tcp://sc.f2pool.com:7788. This URL should be filled in the Pool URL of web page for BM-S1/BM-S2.

f2pool.io/mining/guides/how-to-mine-siacoin/?\_ga=2.124858317.634046822.1632619787-692377230.1629688098

f2pool distributes mining revenues on a daily basis to every user who reaches the payout threshold, which is 100 SC. f2pool's payout scheme is 3% PPS.

We recommend the **official wallet**. After installing it, click Receive to get your new wallet address.

You can also choose an exchange, such as **Binance** or **OKE**. **Note: You should always do your own due diligence when choosing a wallet provider or exchange.**

### 3. Configure your mining device

Your miner must be connected to the f2pool server listed below for your hashrate and revenue to be recorded and monitored.

You'll need to enter the following information in your mining device:

**URL:** stratum+tcp://sc.f2pool.com:7788

**Username:** walletAddress.workerName

**Password:** Your choice

*Please note*

- The list of f2pool mining pool servers is available [here](#).
- workerName is optional, but we recommend labeling each of your mining devices with a separate workerName for more efficient monitoring.

Pool User: some pool will need register user name and some pool will need wallet address. You should fill in right content as the requirement of pool.

worker name: different worker name can be set for each miner to distinguish different miners. You can set it by [Set Name] of MinerTool, if you have many miners.

## b Set pool

MinerTool

File Operation Settings About

TotalNum (5) NormalNum (2) LowHashrate (2) Offline (1)

No.	IPAddr	Version	AgingStat	RunningTime	MacAddr	MachineName	BladeNum	ChipNum	DevType
1	10.10.1.61	cgminer 5.4.22	Aging...	18M15S	1001291D0C2B	107B449EE22A	3(1 2 3)	60 60 60	BM-S2
2	10.10.1.13	cgminer 5.4.23	Aging...						Unknown Type
3	10.10.1.153	cgminer 5.4.23	Aging...						
4	10.10.1.164	cgminer 5.4.23	Aging...	5M01M23S	1001291D0045		3(1 2 3)	60 60 60	BM-S2
5	10.10.1.214	cgminer 5.4.23	Aging...	22M05S	1001291D016A		3(1 2 3)	60 60 60	BM-S1

IPRange: 10.10.1.2-255

Scan 10.10.1.2-255 devices were found

设置矿池

Pools	Worker	Passw	Ext
<input checked="" type="checkbox"/> stratum+tcp://sc.f2pool.com:7788	a4f0d3f15ac36671eac757d18cf0d84d0438d7e289c5b3e443bda9ee706138e	x	IP 无
<input checked="" type="checkbox"/> stratum+tcp://sc-cn.luxor.tech:3333	a4f0d3f15ac36671eac757d18cf0d84d0438d7e289c5b3e443bda9ee706138e	x	IP 无
<input type="checkbox"/>		x	IP 无
<input type="checkbox"/>		x	IP 无

1 devices' pool will be set up

START QUIT

You can choose [Operation]->[Set Pool] to set pool of miner. Fill pool URL in Pools, wallet address in Worker, x in Password on the dialog. If select IP the miner will use the IP address as the worker name. After setting, you should restart the miner.

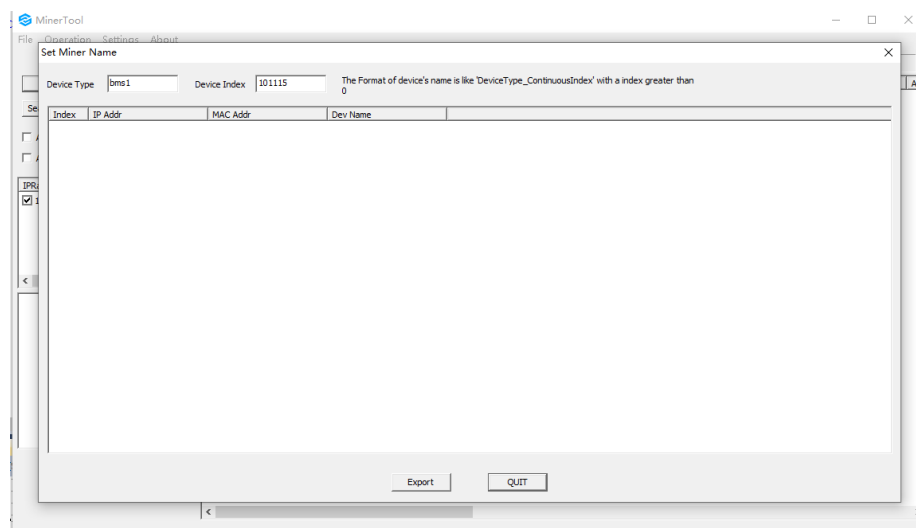
### 3.2.7 Set Name

Miner identification, that is, the number used to identify and maintain the miner in the mining pool. This number is like a house number. It cannot be empty or repeated, otherwise it is difficult to find and maintain. If there are only a few (such as one or two) miners, they can be set arbitrarily. If the quantity is large, it is recommended to set it with miner model + underline + Shelf Number + number of layers + number of each layer. The number of layers is from bottom to top, and the number of each layer is from left to right. Take BMK1\_90203 for example, represents the third miner on the second floor of the ninth shelf.

When setting the miner's identification (or miner name), it is better to set it together by two people, which is more convenient. The steps are as follows:

#### a Software operation

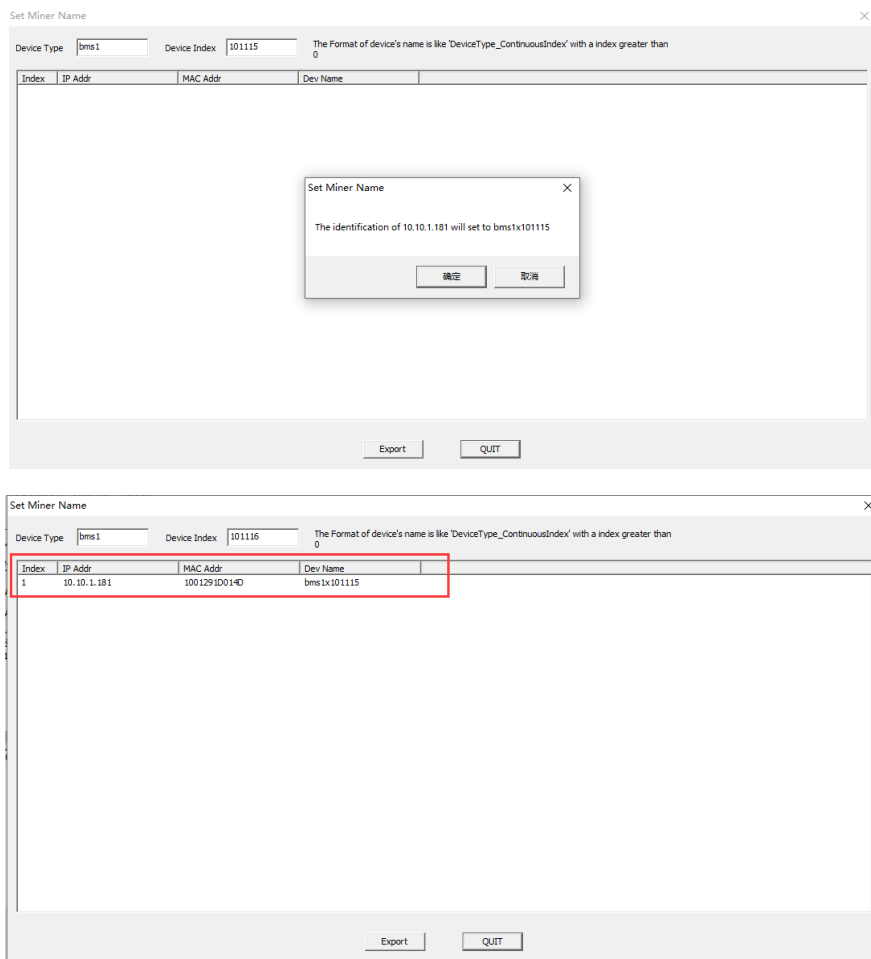
Choose [Operation]->[Set Name] to open the set dialog. Fill in the device type and device index such as 101115



#### b Miner operation

One person presses the IPReport button on the miner. At this time, a prompt box for modifying the identification will pop up. Click OK to set the identification of the miner successfully.





### c Restart effective

After setting, you should restart the miner.

### 3.2.8 Blink Device

Blink the miner to find it easily

### 3.2.9 Inspection

Generally not required.

### 3.2.10 Set Voltage

Set the voltage of miner(generally not required).

### 3.2.11 Get First Worker

Get the current using pool information, such as:

```
10.10.1.214 stratum+tcp://sc.f2pool.com:7788
0d8f31e412df04911ab8fe1b79f5a8a00b4b070918a1c36e475725d3a0bdfb1153fe8c4c4bf2.s1
```

### 3.2.12 Set Safe Temperature

Generally not required.

### 3.2.14 Exec System Cmd

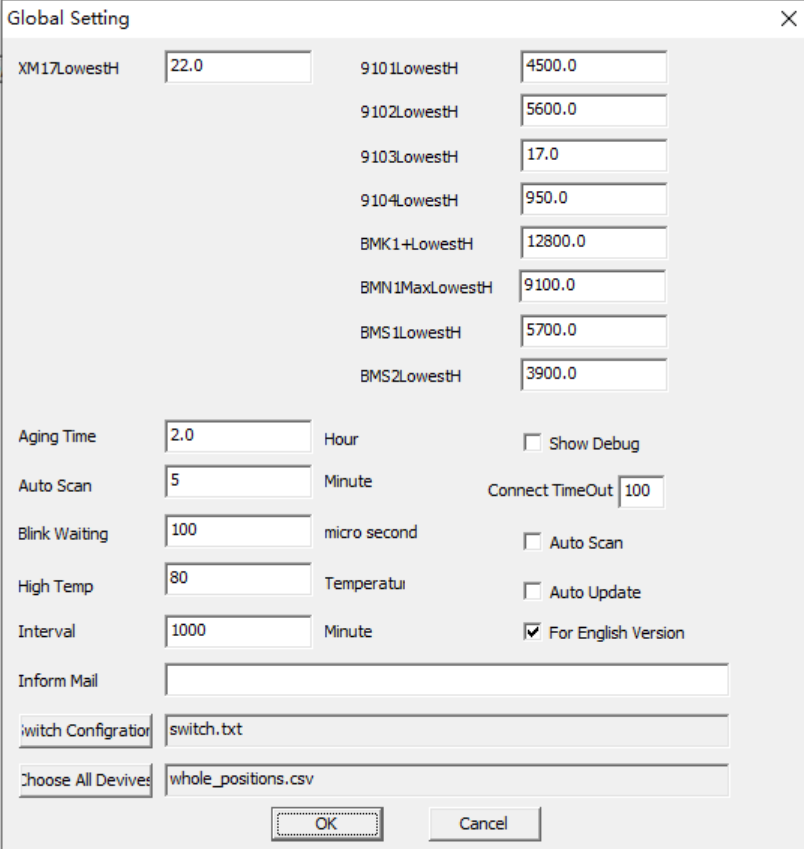
Execute the system command

### 3.2.15 Exec Miner Cmd

Execute the miner command

## 3.3 Settings

Basic setting of MinerTool. Generally not required.



The image shows a 'Global Setting' dialog box with various configuration options. The settings are organized into two columns. The left column includes 'XM17LowestH' (22.0), 'Aging Time' (2.0 Hour), 'Auto Scan' (5 Minute), 'Blink Waiting' (100 micro second), 'High Temp' (80 Temperatur), 'Interval' (1000 Minute), 'Inform Mail' (empty field), 'Switch Configuration' (switch.txt), and 'Choose All Devices' (whole\_positions.csv). The right column includes '9101LowestH' (4500.0), '9102LowestH' (5600.0), '9103LowestH' (17.0), '9104LowestH' (950.0), 'BMK1+LowestH' (12800.0), 'BMN1MaxLowestH' (9100.0), 'BMS1LowestH' (5700.0), 'BMS2LowestH' (3900.0), 'Show Debug' (unchecked), 'Connect TimeOut' (100), 'Auto Scan' (unchecked), 'Auto Update' (unchecked), and 'For English Version' (checked). At the bottom are 'OK' and 'Cancel' buttons.

Parameter	Value
XM17LowestH	22.0
9101LowestH	4500.0
9102LowestH	5600.0
9103LowestH	17.0
9104LowestH	950.0
BMK1+LowestH	12800.0
BMN1MaxLowestH	9100.0
BMS1LowestH	5700.0
BMS2LowestH	3900.0
Aging Time	2.0 Hour
Auto Scan	5 Minute
Blink Waiting	100 micro second
High Temp	80 Temperatur
Interval	1000 Minute
Inform Mail	
Switch Configuration	switch.txt
Choose All Devices	whole_positions.csv
Show Debug	<input type="checkbox"/>
Connect TimeOut	100
Auto Scan	<input type="checkbox"/>
Auto Update	<input type="checkbox"/>
For English Version	<input checked="" type="checkbox"/>

## 3.4 Help

### 3.4.1 Get new version

Will open our official download page <http://ibelink.com.hk/xiazai>



### 3.4.2 About

You can get the official web page of us <http://ibelink.com.hk>

